

**Interpon**<sup>®</sup>  
powder coatings

EVERY COLOR IS GREEN



AkzoNobel

## Interpon D2525 Structura



**Elitfönster**

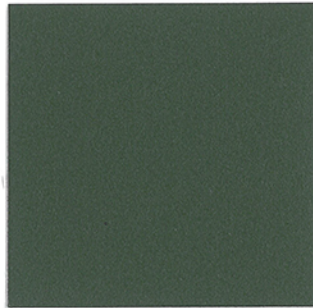


# Natural and dense shades



RAL 7034

YL334F



RAL 6003

YK303F



RAL 6005

YK305F



RAL 6009

YK309F



RAL 9005

YN305F



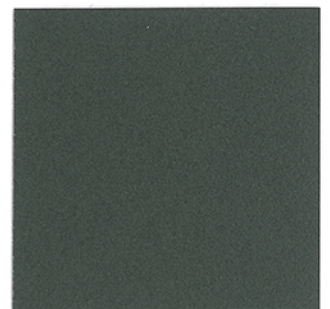
RAL 7024

YL324F



RAL 7006

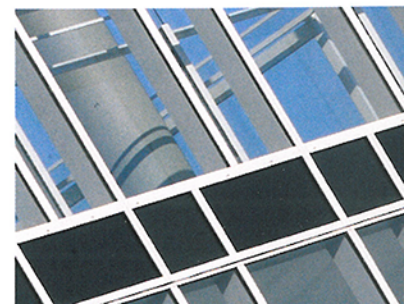
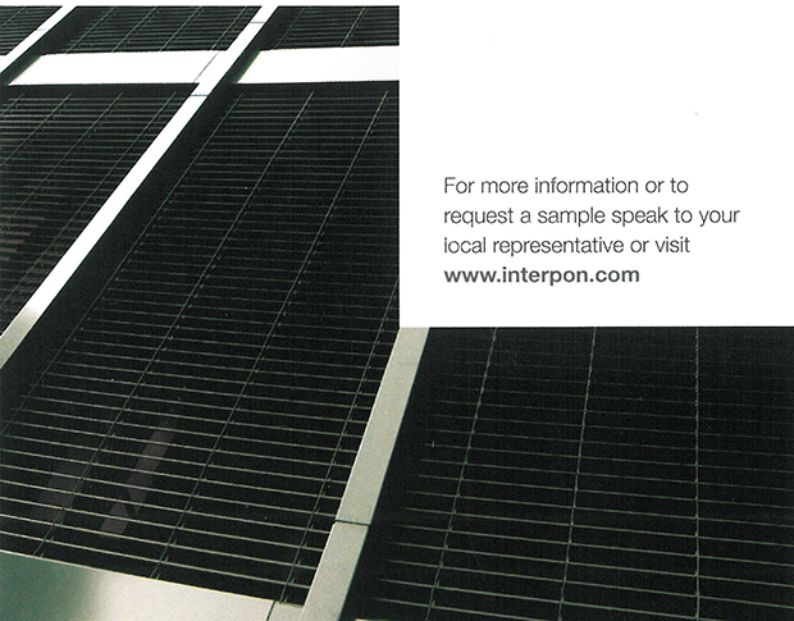
YL306F



RAL 7022

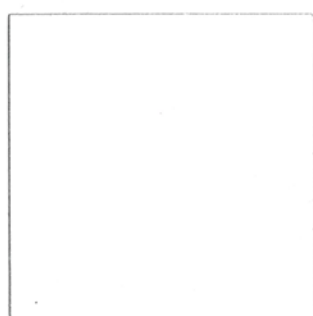
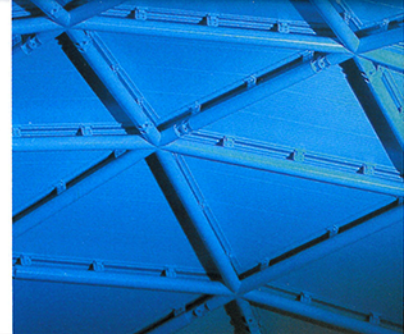
YL322F

For more information or to  
request a sample speak to your  
local representative or visit  
[www.interpon.com](http://www.interpon.com)





# Fresh and light shades



RAL 9016

YA316F



RAL 5010

YJ310F



RAL 5023

YJ323F



RAL 5024

YJ324F



RAL 1013

YD313F



RAL 1015

YD315F



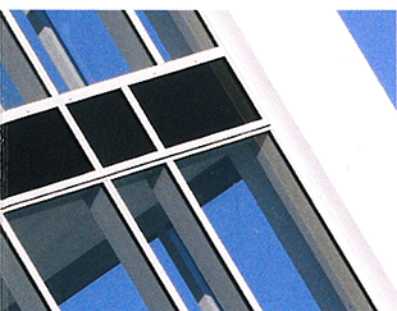
RAL 6021

YK321F



RAL 6017

YK317F



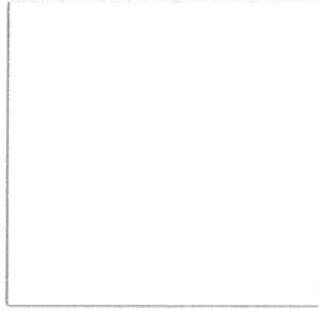


# Neutral and strong shades



RAL 6029

YK329F



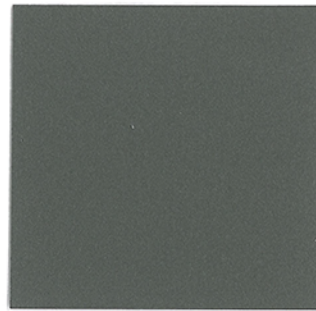
RAL 9010

YA310F



RAL 3004

YG304F



RAL 7039

YL339F



RAL 7040

YL340F



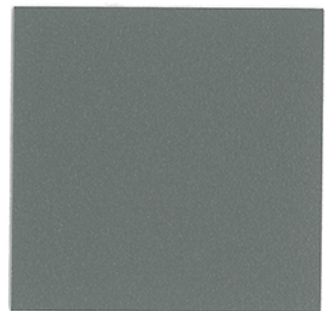
RAL 7016

YL316F



RAL 7012

YL312F

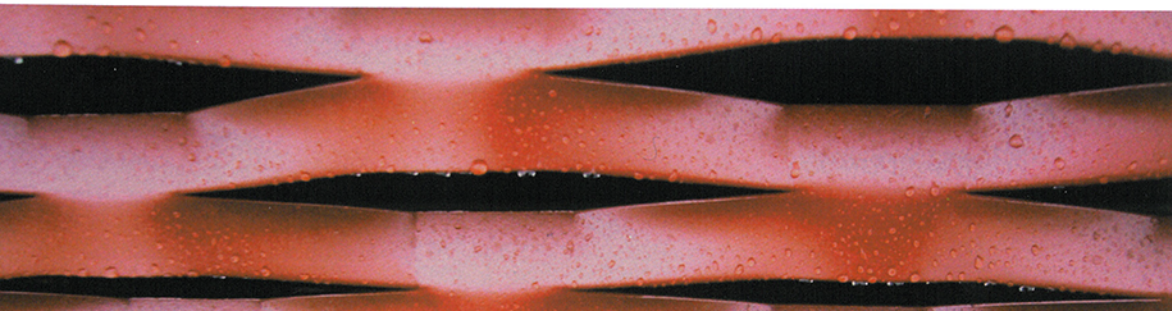


RAL 7037

YL337F



Visit your local Interpon website for further information or scan to order samples

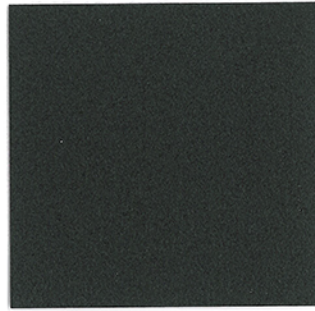




# Mineral and deep shades



RAL 7035



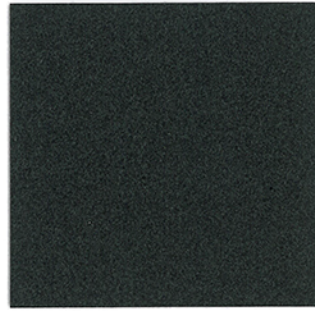
RAL 8019

YM319F



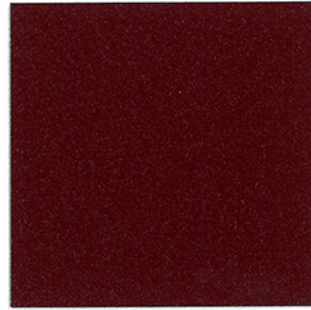
RAL 7015

YL315F



RAL 7021

YL321F



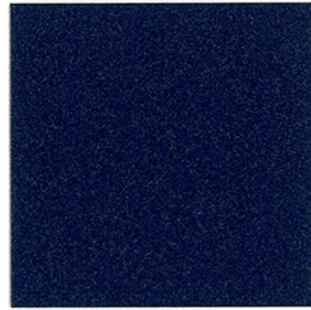
RAL 3005

YG305F



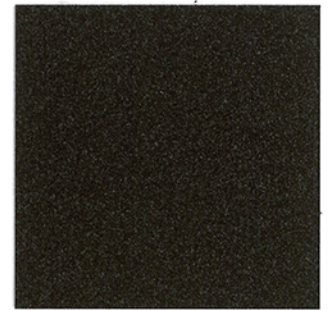
RAL 8011

YM311F



RAL 5003

YJ303F



RAL 8014

YM314F



For more information or to  
request a sample speak to your  
local representative or visit  
[www.interpon.com](http://www.interpon.com)







All of the powder coatings presented in this color card have been optimized to give the highest consistency of finish during the application processes.

However, slight variations could appear depending on the actual application specification or application of the powder. Our Technical support team is at your disposal.

Structura is a range for use on exterior architectural metal components.

The finishes shown on this card are made with AkzoNobel's **Interpon D2525** technology. **Interpon D2525** is an ultra durable powder coating, which meets the demanding weathering requirements of the leading industry specifications Qualicoat Class 2, GSB Master and AAMA 2604-05, as well as BS EN 12206.

Structura means your design will be long-lasting, keeping its stylish visage for many years to come. When specifying or ordering, ensure you include the full product designation, e.g.

Product: Interpon D2525 Structura

Shade: RAL 6005

Product code: YK305F